

# CFP Castlefield Thoughtful UK Smaller Companies Fund

SDR CONSUMER FACING DISCLOSURE - 02 DECEMBER 2024

ISIN: GB00B1XQNH95 | SEDOL: B1XQNH9 | FCA PRN REFERENCE: 634406



## CASTLEFIELD - THE THOUGHTFUL INVESTOR®

Whether we recognise it or not, we all bring our personal values to bear when making choices in life. Castlefield adopts a progressive approach to looking after money, in turn reflecting the individual objectives and values of all kinds of clients – from investors in the investment funds we manage, to private individuals and their personal pensions, to the not-for-profit organisations they establish and help to run. What sets us apart is that we work closely with clients to help them to understand and define what careful and ethical investment means to them. We then interpret the results in practical ways which never ignore the need for real-world financial outcomes. Our dedicated team is committed to achieving dependable long-term growth through independence and innovation, respect and responsibility. As an employee-owned business, we make sure that everything we do reflects not only the values we share as co-owners of our own business, but the principles that are important to our clients too. All delivered via a service which is as personalised and accessible as each of our clients wants it to be. That's why we're known as 'the Thoughtful Investor'®

## INVESTMENT LABEL

This product does not have a UK sustainable investment label.

Sustainable investment labels help investors find products that have a specific sustainability goal. This Fund has sustainability characteristics included as part of the investment approach but does not pursue a sustainability objective or any specific sustainability outcomes.

The Investment Manager provides values-based investment. As such, the investment approach adopted is broader than would be the case for a labelled fund.

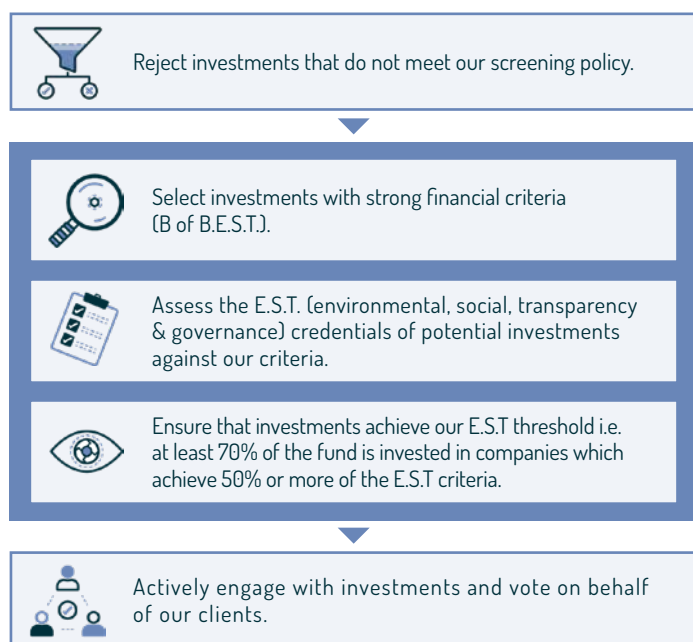
## SUMMARY OF THE FUND

The Fund aims for long term capital growth, over five-year rolling periods, by investing at least 80% of its value in UK listed smaller companies, alongside those quoted on the Alternative Investment Market. Investments will be selected in accordance with the Investment Adviser's Thoughtful Investor® approach (as set out in the Sustainability Approach below).

The Fund is managed by ConBrio Fund Partners Ltd. The delegated investment manager is Castlefield Investment Partners LLP (CIP).

## SUSTAINABILITY APPROACH

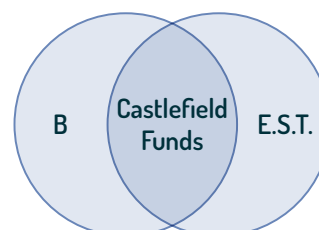
### The Thoughtful Investor® Approach



### What the fund will not invest in

The fund will not invest in any company if more than 10% of revenues or profits come from: manufacture and distribution of **weapons** and related systems, **nuclear military** exposure, **nuclear power** generation, mis-marketing of **infant milk formula**, extraction or processing of **fossil fuels**, **production** and retailing of **fur products**, **animal testing** for cosmetics, manufacture and retailing of **alcohol**, **gambling**, **pornography**, **tobacco**, **high interest-rate lending**, **mining**.

### The B.E.S.T. Framework

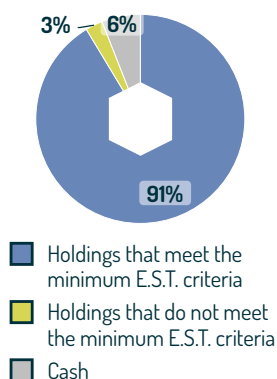


Alongside an assessment of financial credentials ('B'), the investment manager will assess each 'E.S.T.' component of the B.E.S.T. framework and report on the outcome relative to an index of similar investments.

- B Business & Financial:** Assessment of investment's business and financial credentials.
- E Environmental:** Company performance compared to peers on carbon, waste and fresh water use. Revenues from products or services that align with environmental United Nations Sustainable Development Goals.
- S Social:** Company performance compared to peers on ratio of executive pay to average employee pay. Level of tax avoidance/controversies. Revenues from products or services that align with social United Nations Sustainable Development Goals.
- T Transparency & Governance:** Assessment of board independence. Board diversity. The absence of bribery and corruption.

## SUSTAINABILITY METRICS

### Percentage of fund by weight meeting minimum E.S.T. threshold



#### Why doesn't 100% of the Fund meet the E.S.T. minimum threshold?

Two reasons:

- Some of the Fund needs to be held as cash.
- All holdings in the Fund have passed our screening policy, but a small percentage may not pass the minimum E.S.T. criteria. We hold these companies for other reasons, such as fund diversification. In some instances, the company may have temporarily fallen below the threshold. This is where we can engage with the company to understand the reason and encourage improvements.

#### The metrics

The metrics displayed below are used to assess the Fund's performance against a suitable benchmark (Morningstar – UK Small Cap). These metrics cover 91% of the fund's holdings. The analysis excludes cash and two holdings not covered by our third party data provider.

These metrics reflect the core values of the 'Thoughtful Investor'® approach and can be used to monitor whether the Fund is achieving its values-led objective.

■ Performs better than, or equal to, the benchmark   ■ Performs worse than the benchmark

<b>Scope 1 &amp; 2 carbon</b> Fewer Scope 1 & 2 emissions produced	<b>64%</b> ↓	<b>Scope 3 carbon</b> More Scope 3 carbon emissions produced	<b>208%</b> ↑
<b>Waste</b> Fewer tonnes of waste generated	<b>91%</b> ↓	<b>Board independence</b> Lower percentage of independent board members	<b>9%</b> ↓
<b>Board diversity</b> Fewer women on boards and in top management	<b>26%</b> ↓	<b>Executive pay</b> Lower ratio of executive level pay to average employee pay	<b>60%</b> ↓
<b>Tax responsibilities</b> More tax avoided by corporate tax mitigation schemes	<b>16%</b> ↑	<b>Environmental good</b> More revenue allocated to environmental solutions	<b>168%</b> ↑
<b>Social good</b> More revenue allocated to help alleviate social issues	<b>176%</b> ↑	<b>Environmental harm</b> Less revenue allocated to environmentally destructive industries	<b>87%</b> ↓
<b>Social harm</b> Less revenue allocated to industries aggravating social issues	<b>100%</b> ↓	<b>Geographic Median Income</b> Higher median income weighted by geographic economic activity	<b>5%</b> ↑
<b>Water efficiency</b> Less fresh water used	<b>6%</b> ↑	<b>Geographic water use</b> Equal geographic water use	<b>0%</b> =

**Source:** Data for the metrics was extracted from the Impact Cubed platform on 18/11/24, using Castelfield equity fund data from 27/09/24 and external party fund data from June 2024. Impact Cubed uses estimated data when reported data isn't available. The use of estimated data ranges from 0% to 85%, depending on the metric. View important information regarding the Impact Cubed metrics (see right).

#### FURTHER INFORMATION:

<a href="#">The Castlefield Funds Screening Policy</a>
<a href="#">Stewardship Report 2023</a>
<a href="#">Thoughtful Investor Policy</a>
<a href="#">Risk and Return</a>

#### OTHER DOCUMENTS:

<a href="#">Fund Prospectus</a>
<a href="#">Fund Factsheet</a>
<a href="#">Key Investor Information Document (KIID)</a>

## IMPORTANT INFORMATION

This document is issued by Castlefield Investment Partners LLP (CIP). The fund is managed by ConBrio Fund Partners Ltd. It is intended for information purposes only and does not constitute or form part of any offer or invitation to buy or sell any security including any shares in the CFP Castlefield Thoughtful UK Smaller Companies Fund. It should not be relied upon to make an investment decision. Investors should not purchase shares in the Fund except on the basis of information contained in the Fund scheme documents and appropriate professional advice. This document is only made available to recipients who may lawfully receive it in accordance with applicable laws, regulations and rules and binding guidance of regulators

CIP is authorised and regulated by the Financial Conduct Authority. Number 432488. Registered in England & Wales No. 0C302833. Registered Office 111 Piccadilly, Manchester, M1 2HY. Part of the Castlefield employee-owned group.

The authorised Corporate Director (ACD) of the Fund is ConBrio Fund Partners Ltd and is authorised and regulated by the Financial Conduct Authority. Number 229057. Registered in England & Wales No. 04605261. Registered Office Exchange Building, St John's Street, Chichester, West Sussex PO19 1UP.

Past performance should not be seen as an indicator of future performance. With any investment your capital is at risk. Where an investment involves exposure to a foreign currency, changes in rates of exchange may cause the value of the investment, and the income from it, to go up or down.

For more information on the Sustainability disclosure and labelling regime, please see: <https://www.fca.org.uk/firms/climate-change-and-sustainable-finance/sustainability-disclosure-and-labelling-regime>

The information in this document relating to the sustainability metrics of portfolios or securities which is the property of Impact Cubed IC (the "Information", "Impact Cubed") has been obtained from, or is based on, sources believed by Impact Cubed to be reliable, but is not guaranteed as to its accuracy or completeness. No representation, warranty, or undertaking, express or limited, is given as to the accuracy or completeness of the information or opinions contained in this document by Impact Cubed, any of its partners or employees, or any third party involved in the making or compiling of the Information, and no liability is accepted by such persons for the accuracy or completeness of any information or opinions.

None of the Information is intended to constitute investment advice or a recommendation to make (or refrain from making) any kind of investment decision and may not be relied on as such.

The Information is strictly confidential and is the property of Impact Cubed. Any use of the Information requires a license from Impact Cubed. The Information may not be reproduced, further distributed or published in whole or in part by any recipient without prior written permission from Impact Cubed. The Information may not be used to create derivative works or to verify or correct other information.

RGUKSCCFD/281124

